

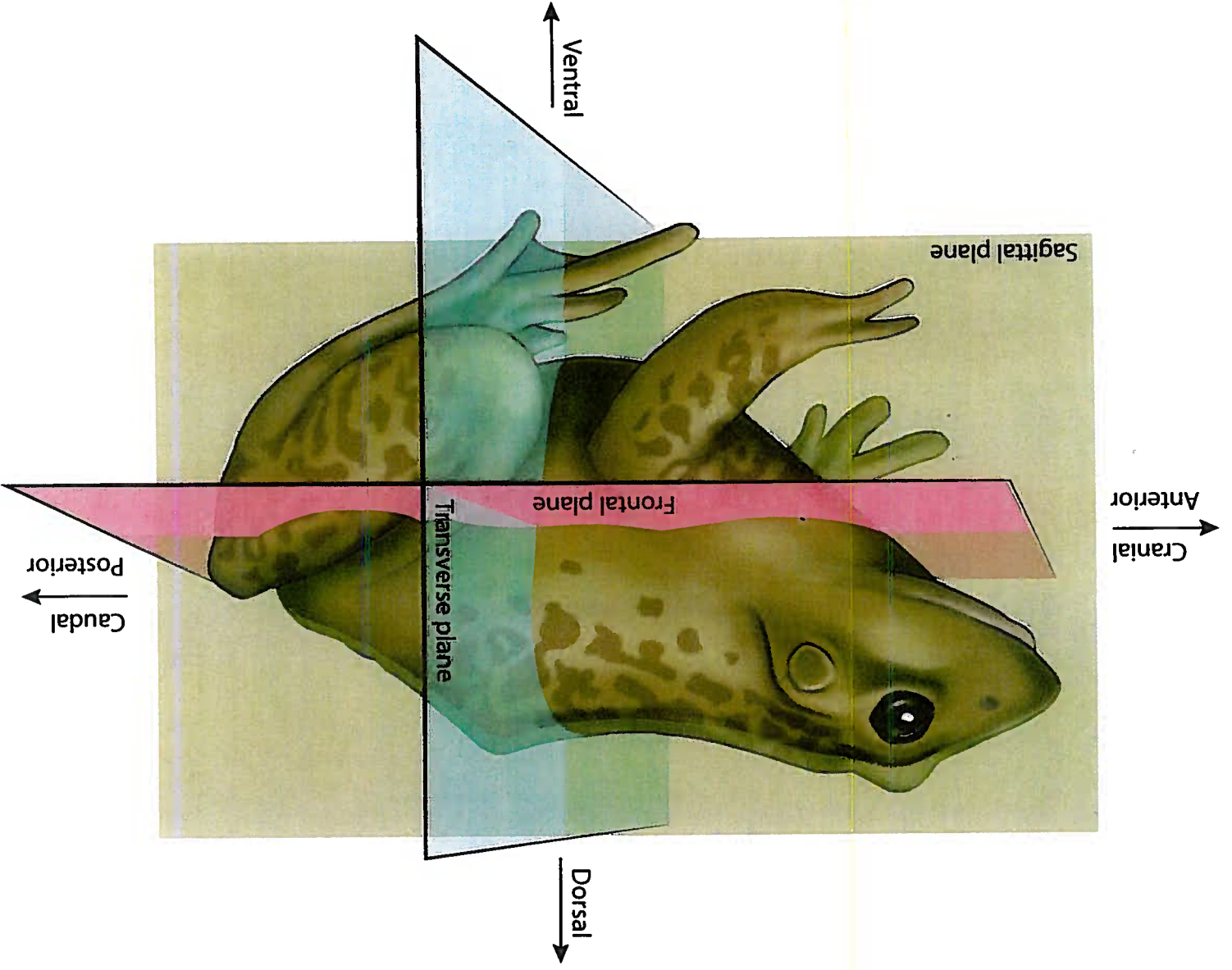


**Frog Visual Dissection Guide**

Illustrated by Leah Horgesang

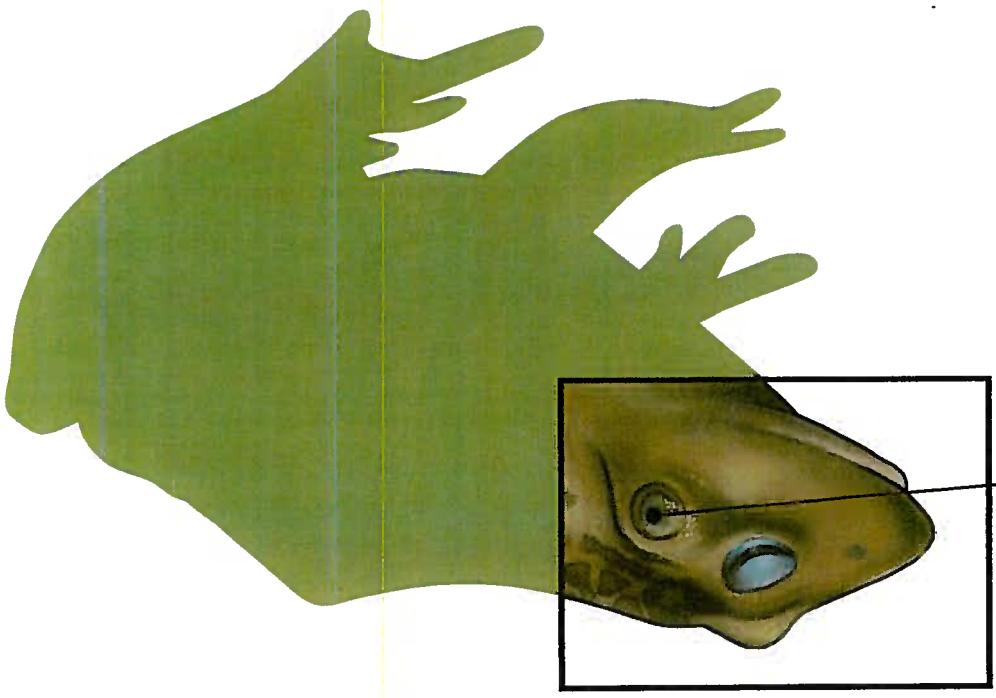
**Ward's**  
**Science**

# Orientation

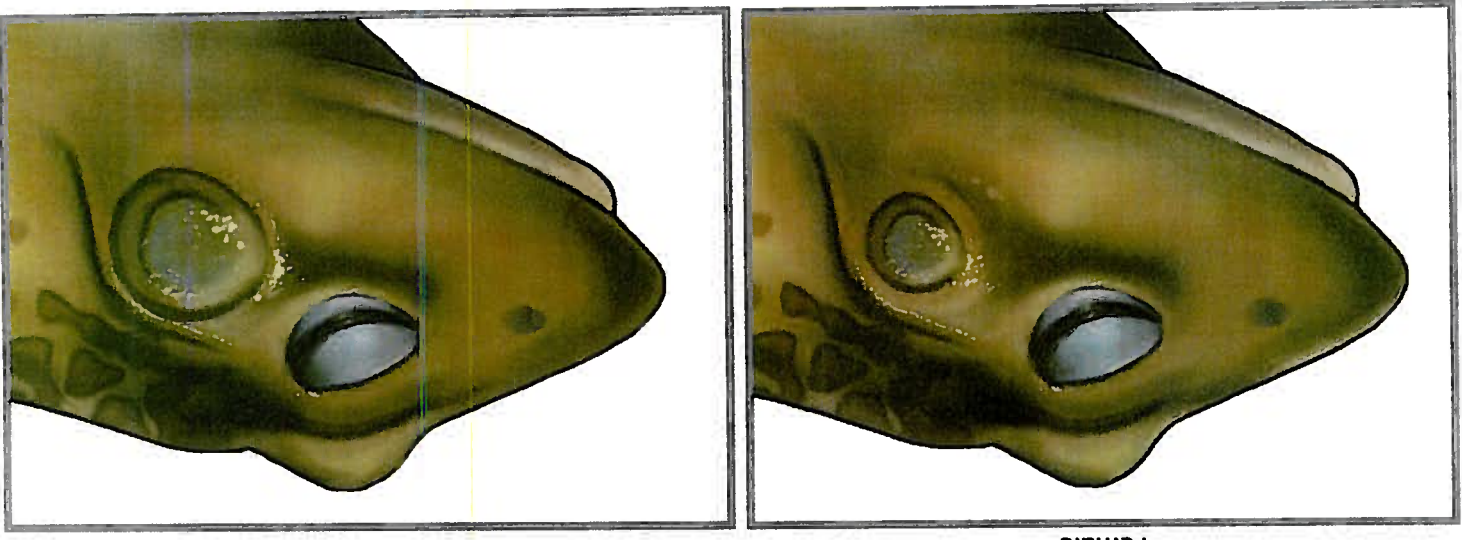


# Tympanum Size

Distinguish Gender from External Features

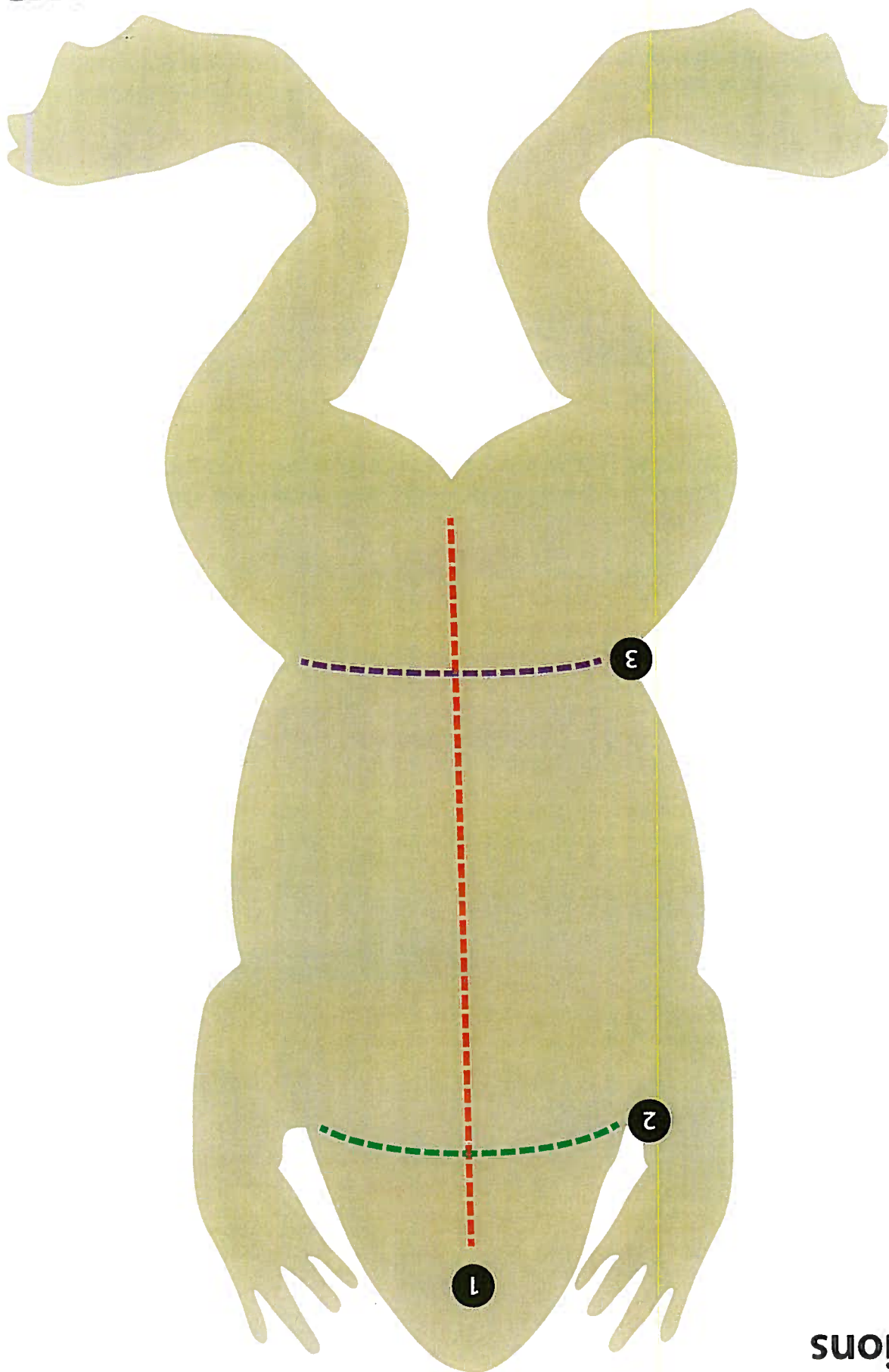


Tympanum



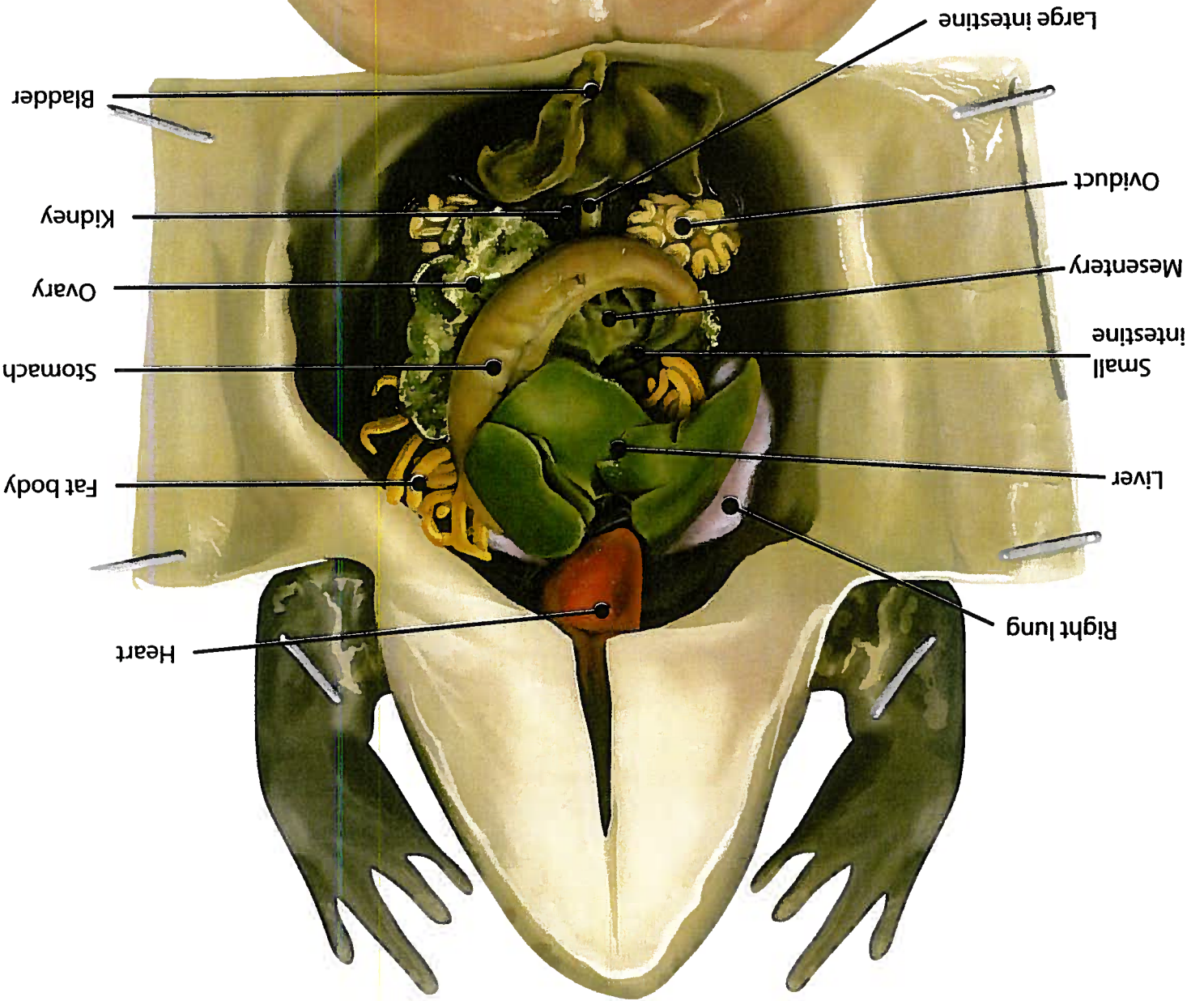
Male

Female

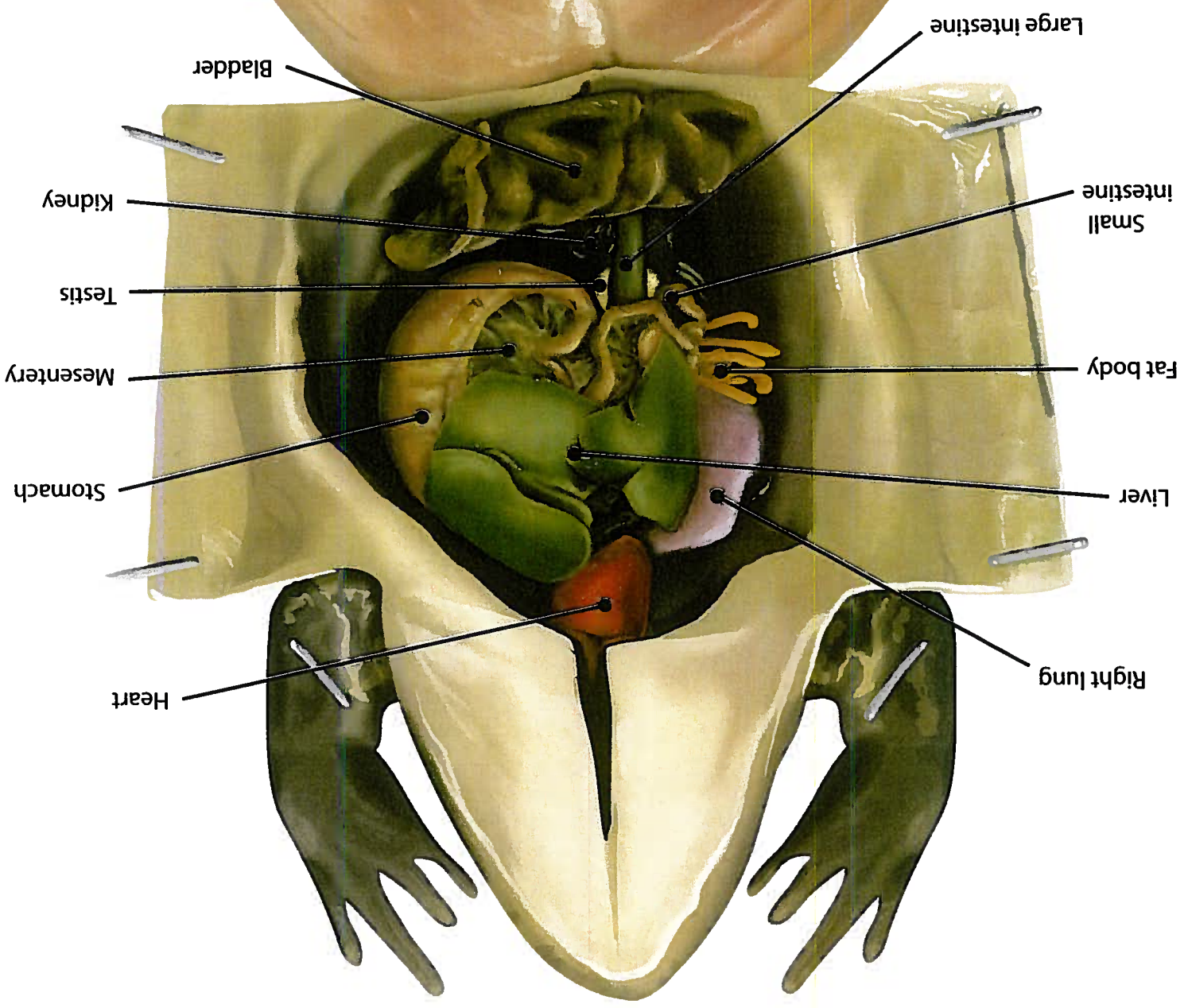


Incisions

# Female Internal Organs



# Male Internal Organs



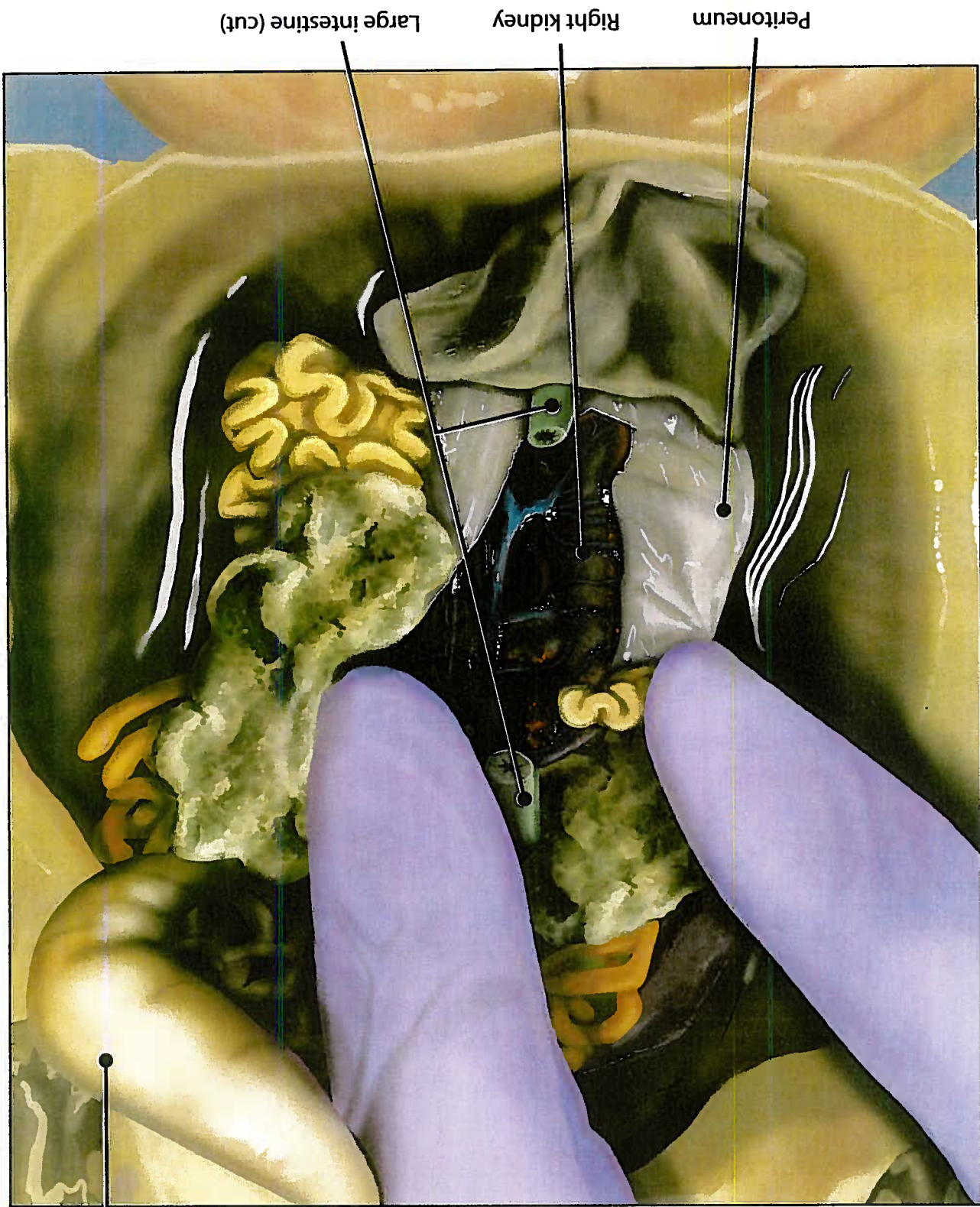
# Procedure | View the Gallbladder

Reflect the liver superiorly.



# Procedure | View the Kidneys

Cut large intestine and peritoneum.

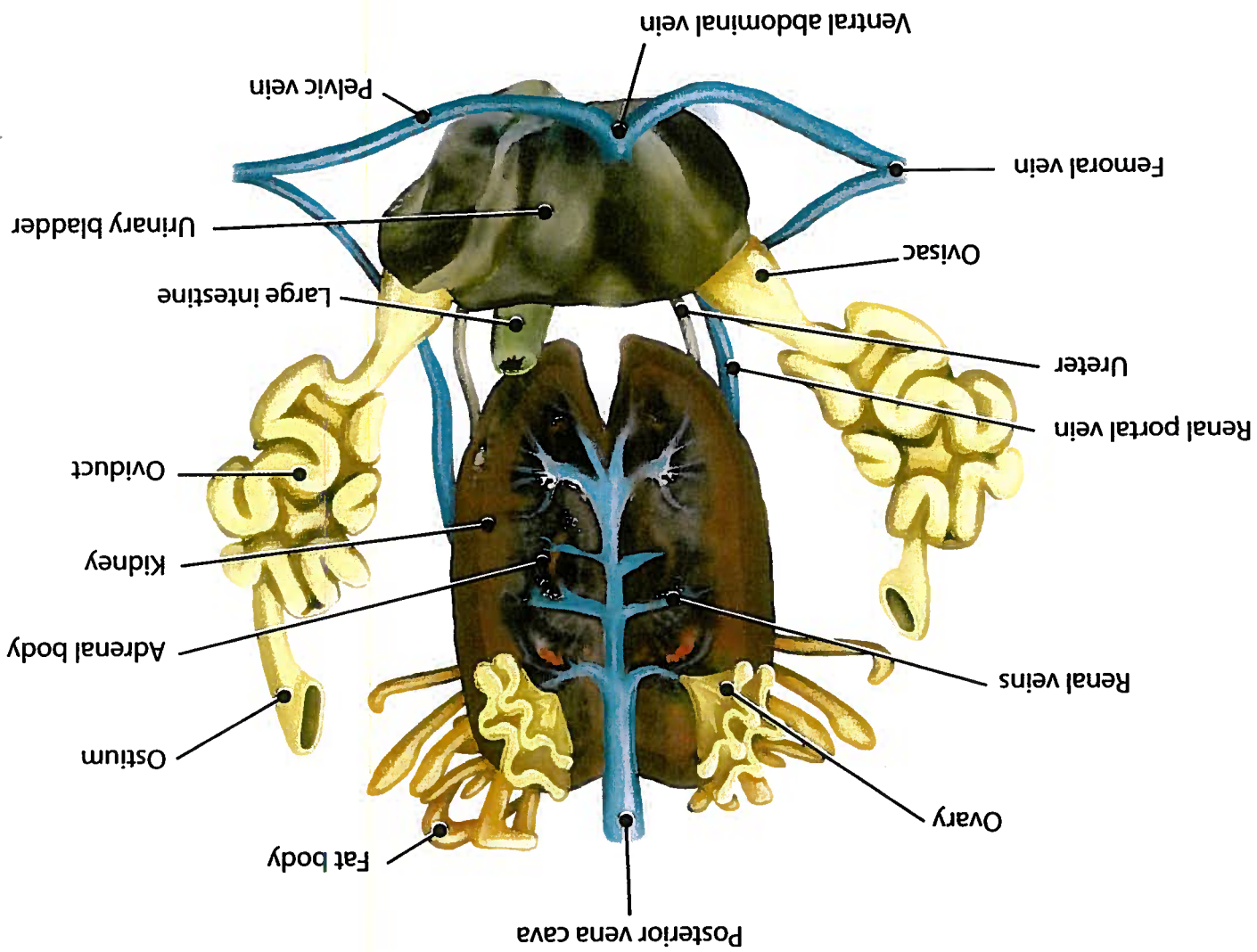


Peritoneum  
Right kidney  
Large intestine (cut)

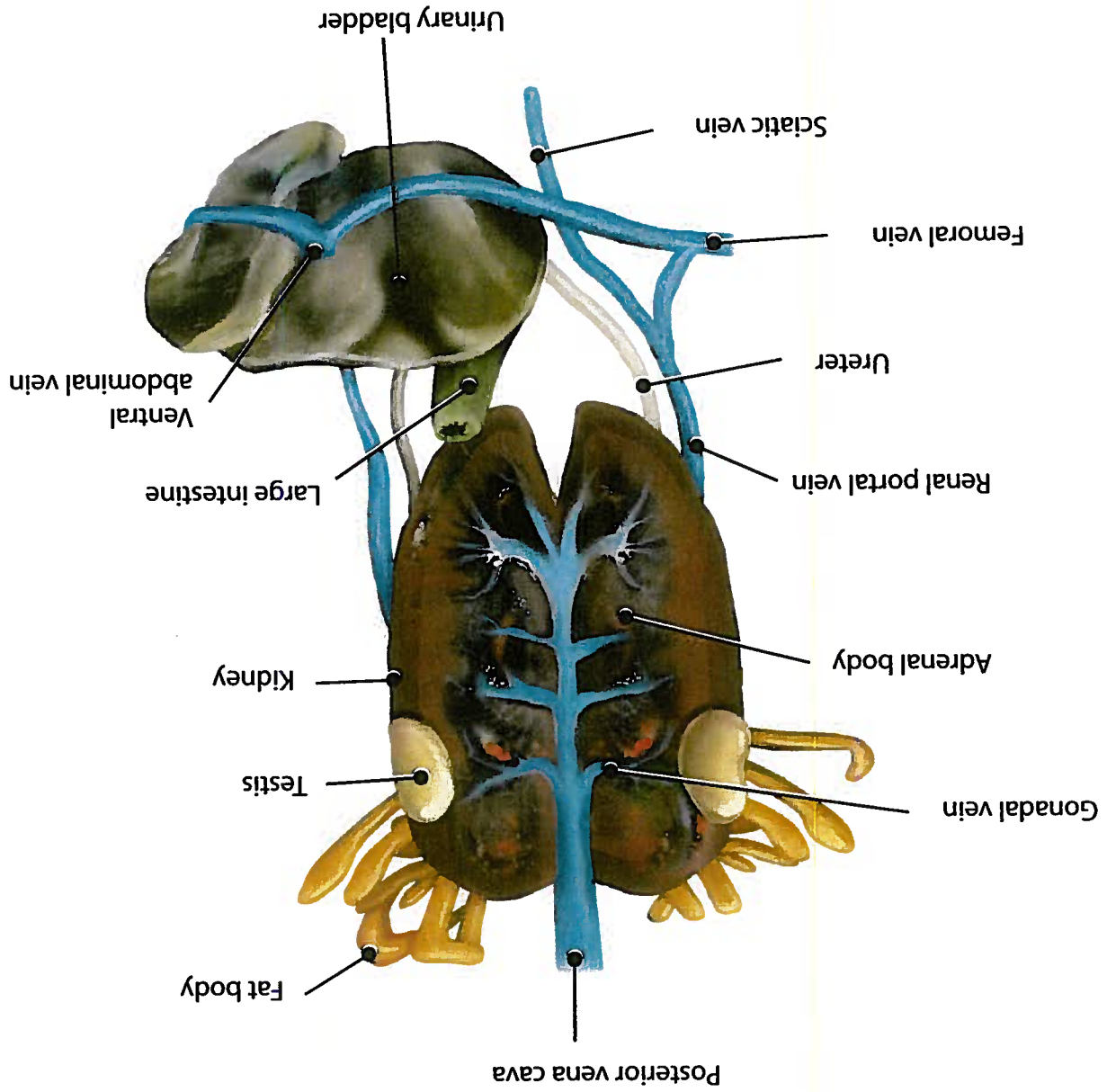
Stomach



# Female Urogenital System

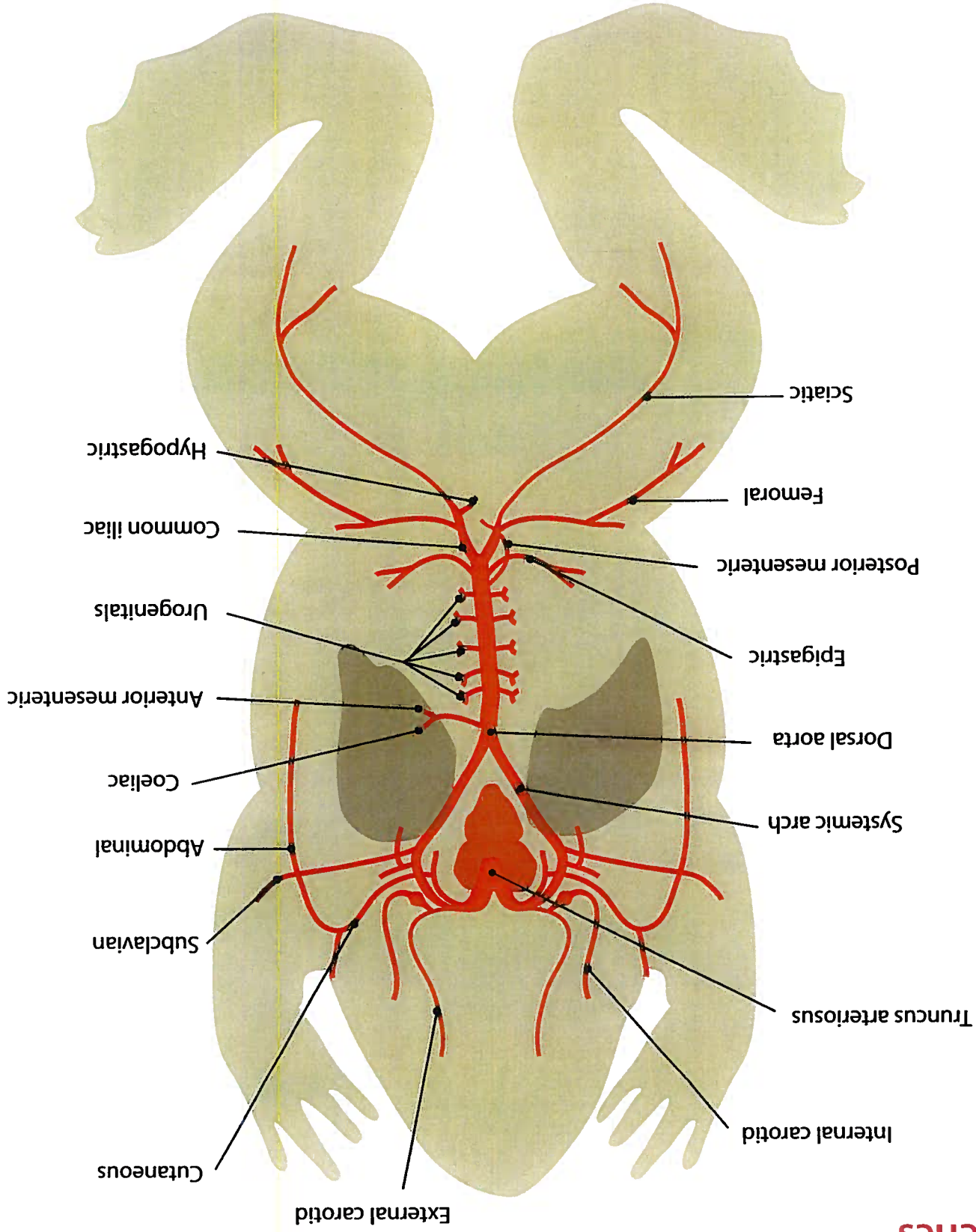


# Male Urogenital System



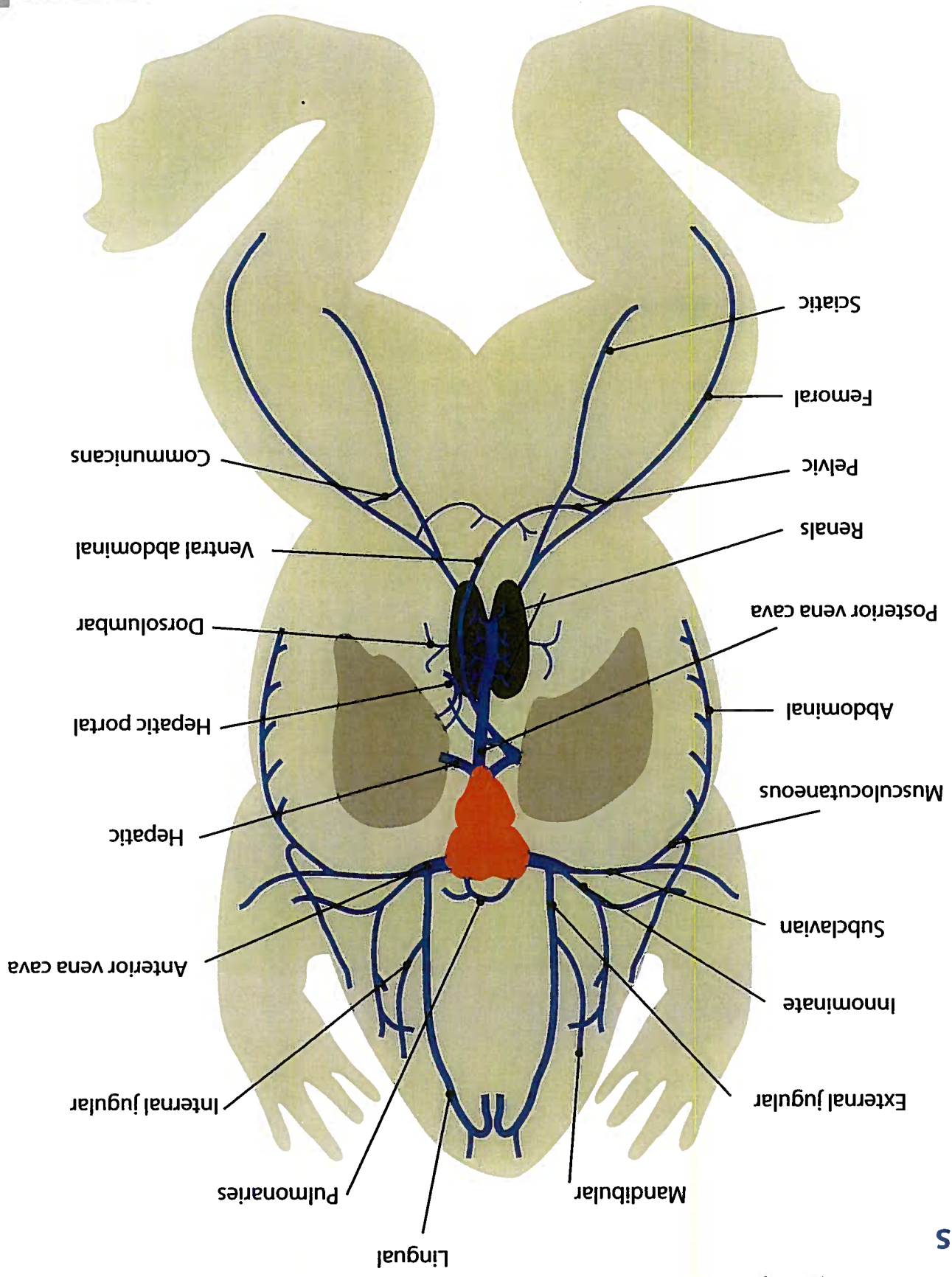
# Circulatory System

## Arteries



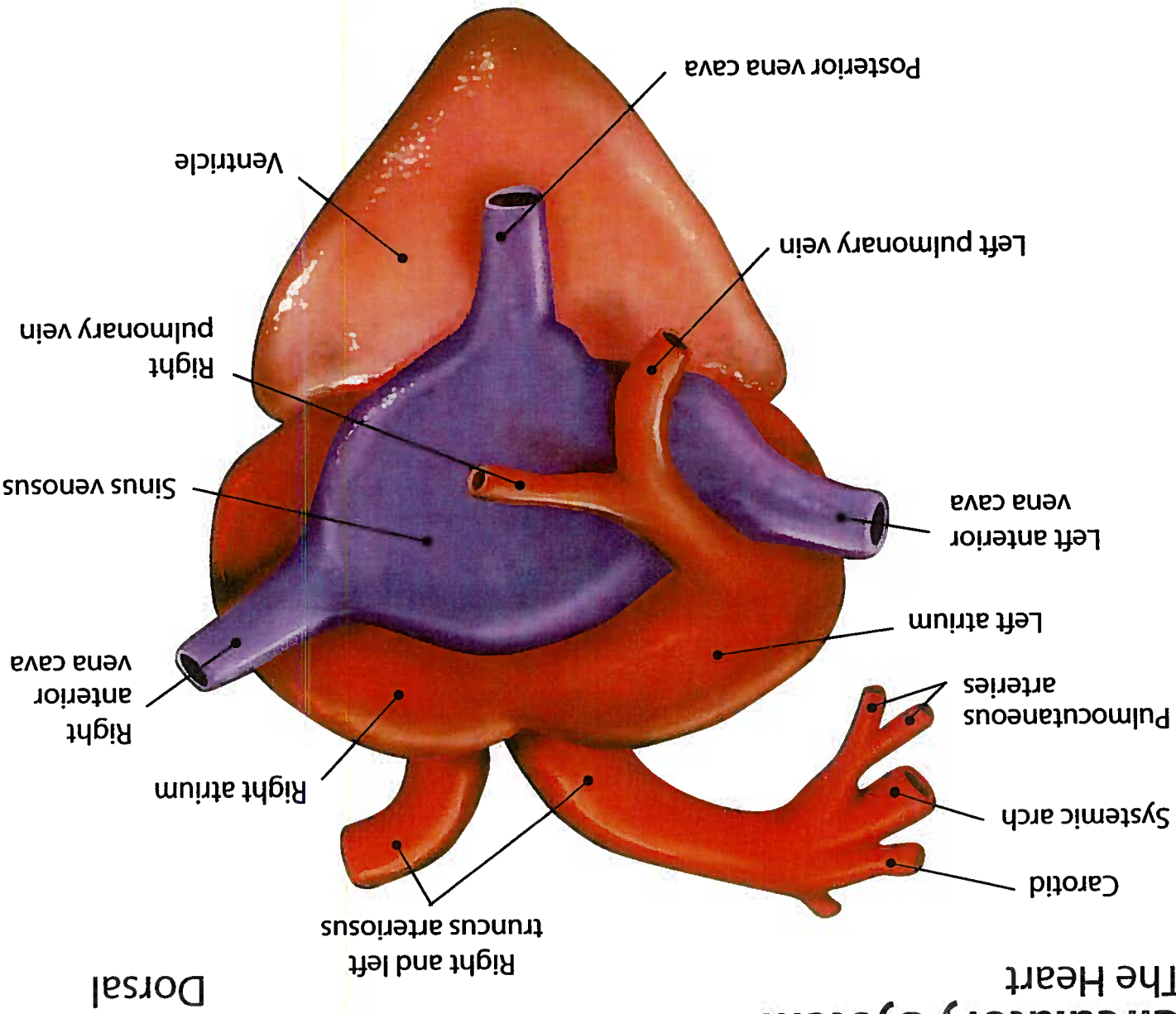
# Circulatory System

## Veins



# Circulatory System

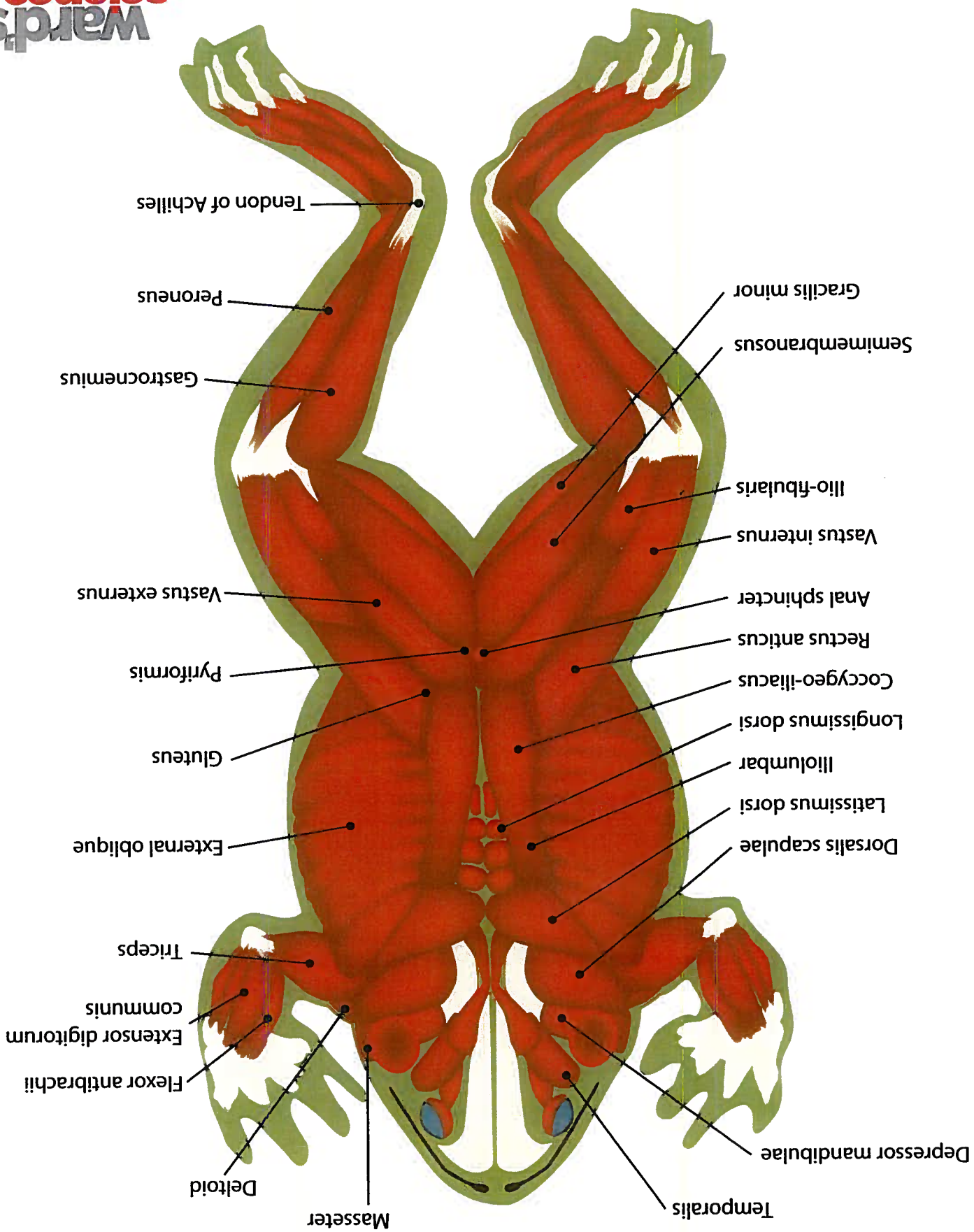
## The Heart



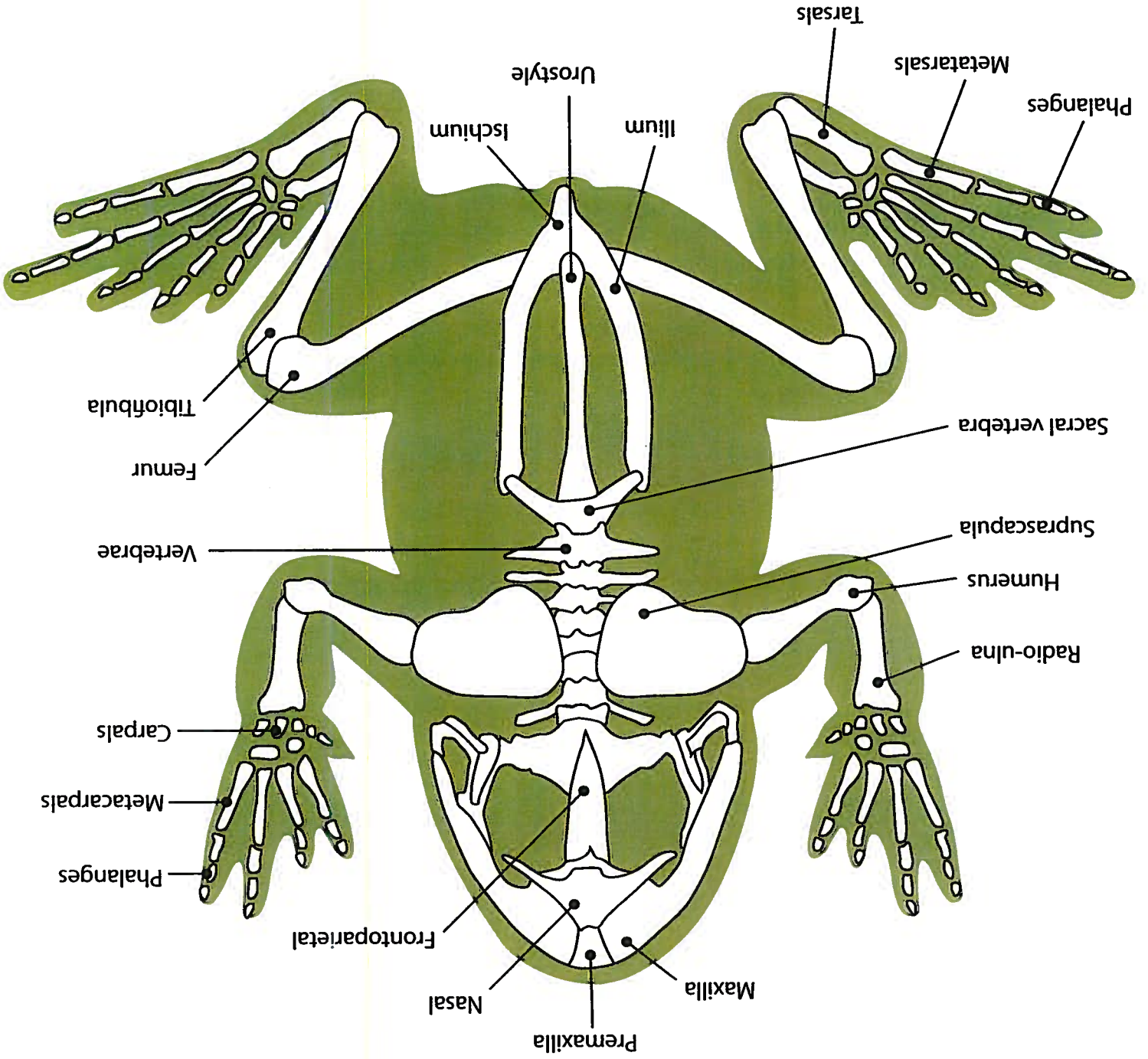
Ventral



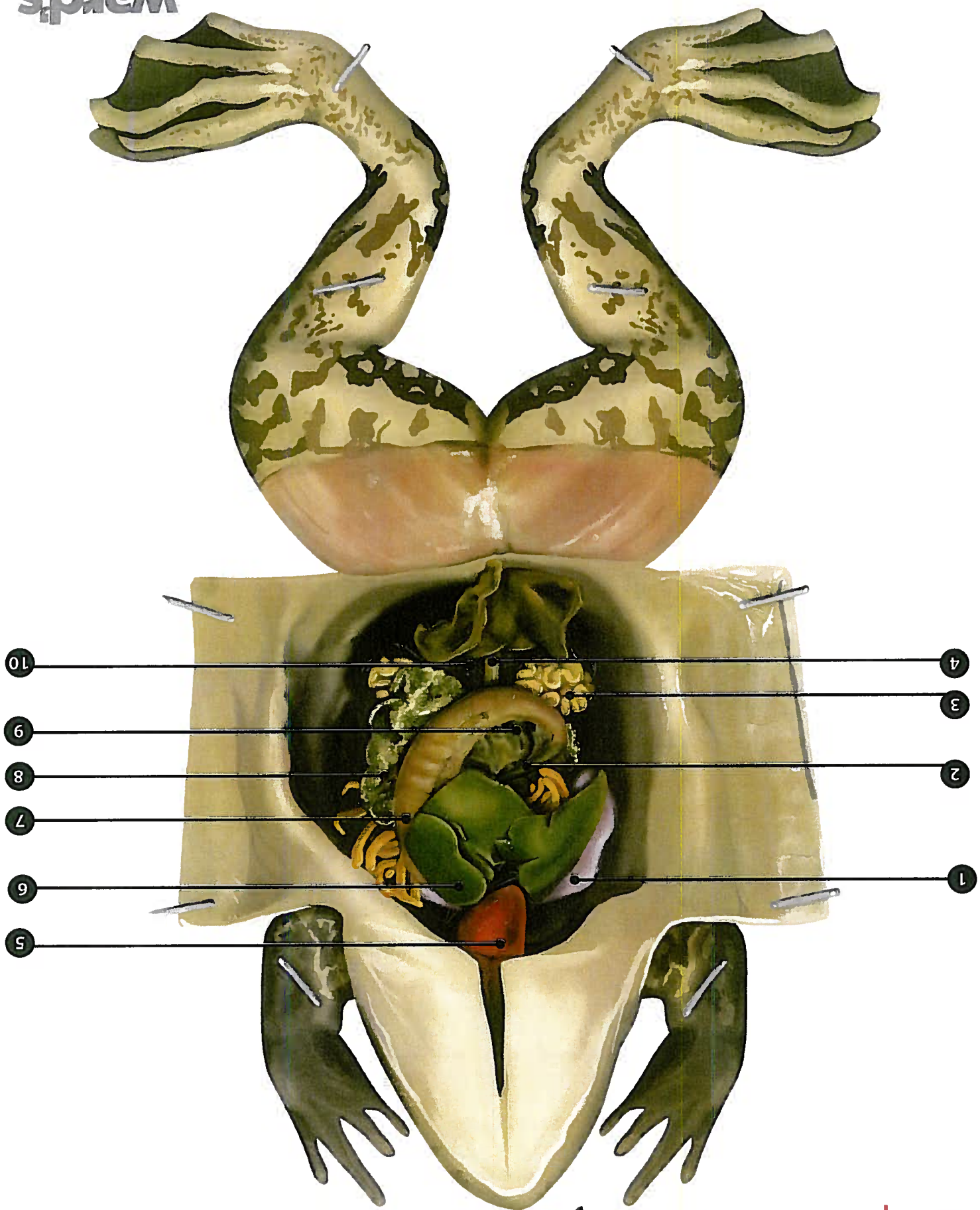
# Dorsal Muscular System



# Skeletal System

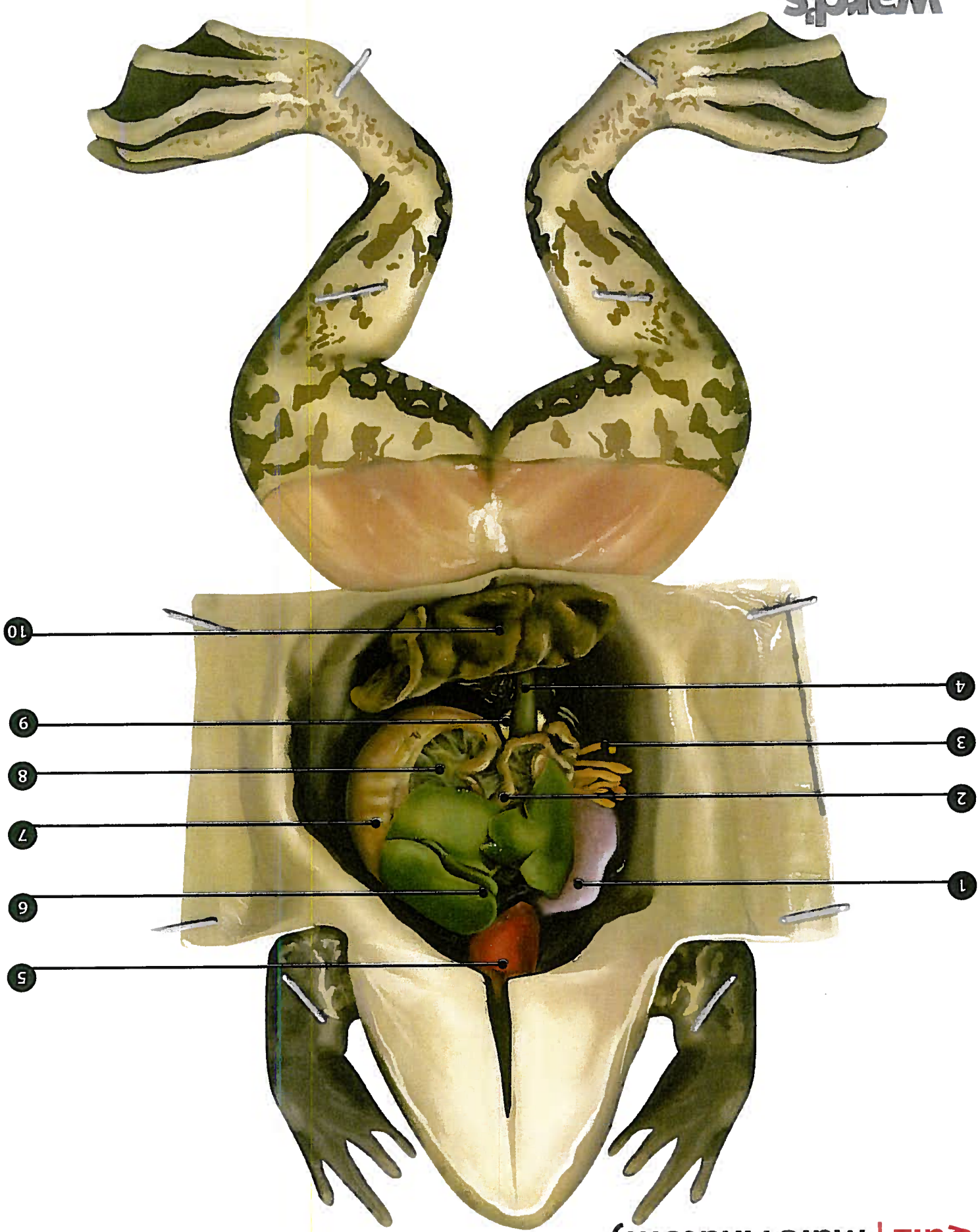


# Quiz | Female Anatomy





# Quiz | Male Anatomy



# Quiz | Answer Key

## Female Anatomy

1. Right lung
2. Small intestine
3. Oviduct
4. Large intestine
5. Heart
6. Liver
7. Stomach
8. Ovary
9. Mesentery
10. Kidney

## Male Anatomy

1. Right lung
2. Small intestine
3. Fat body
4. Large intestine
5. Heart
6. Liver
7. Stomach
8. Mesentery
9. Testis
10. Bladder