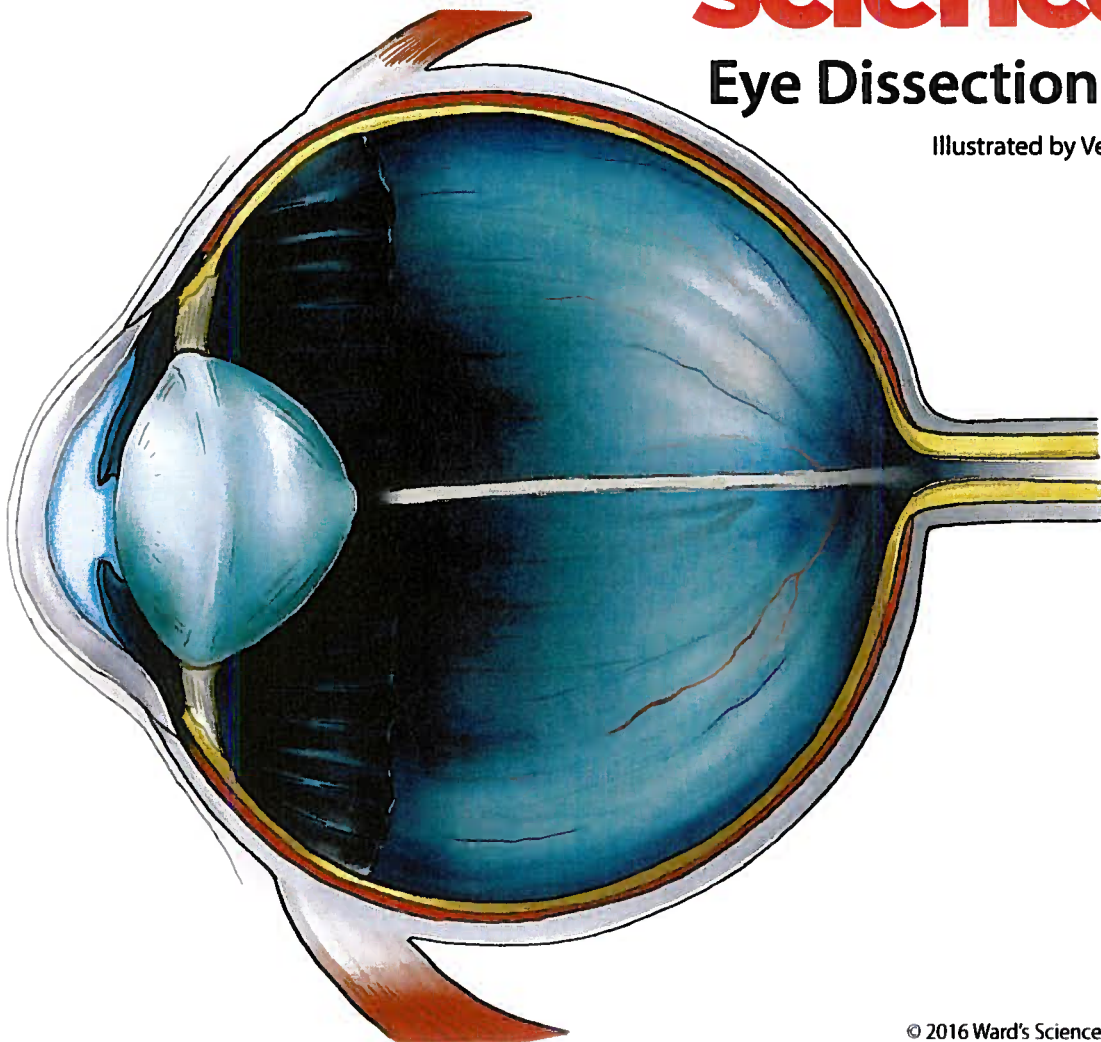


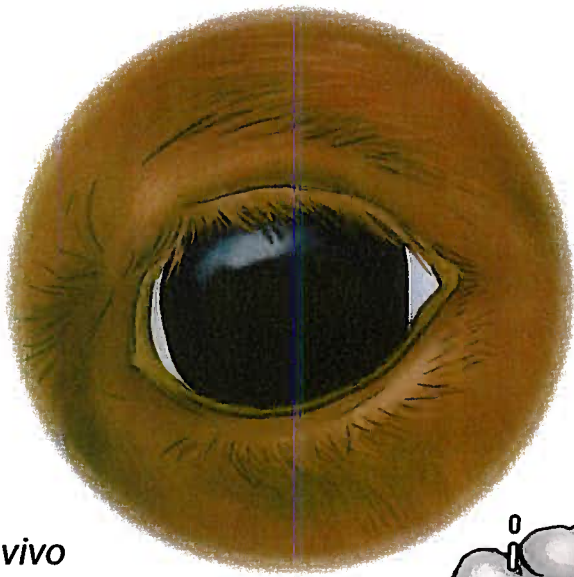
ward's science+

Eye Dissection Guide

Illustrated by Veronica Zoekler

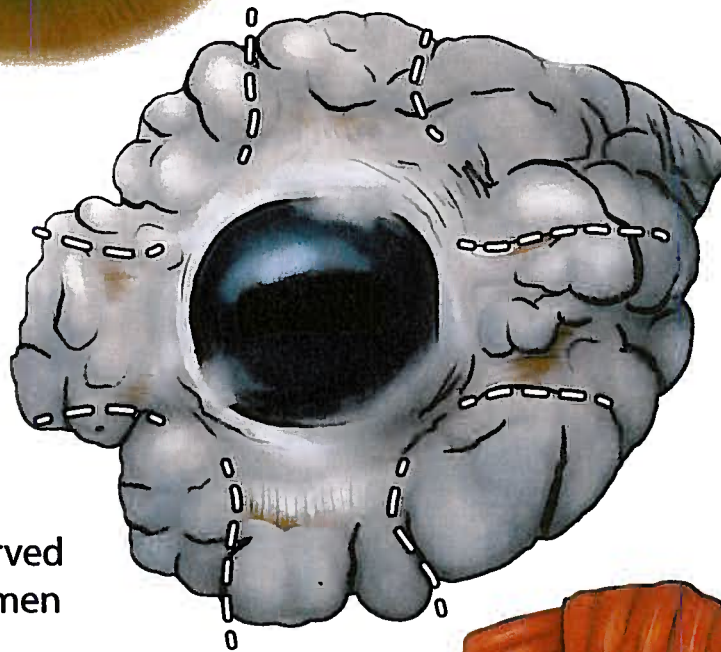


Your Eye Specimen

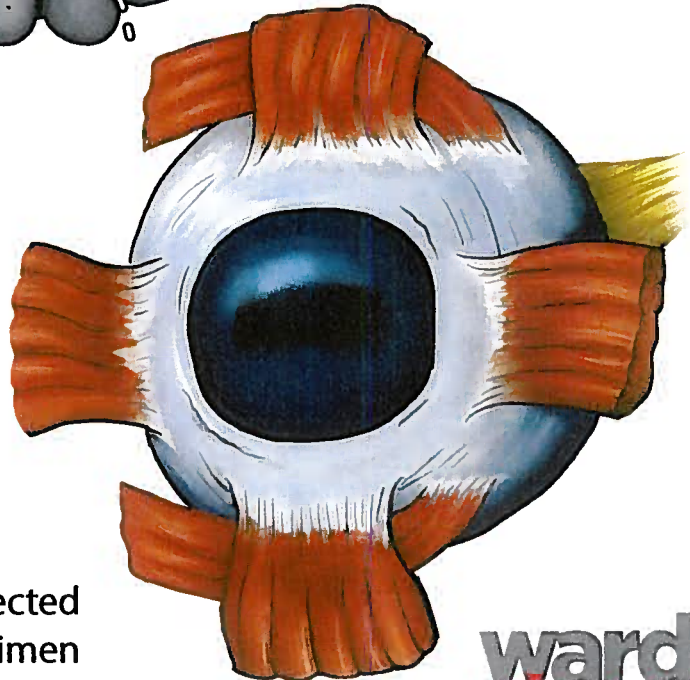


A. *In vivo*

Before dissecting the eye specimen, look at all the anatomical features around the eye. It is likely that your eye specimen has fat and connecting tissue that will require removal.

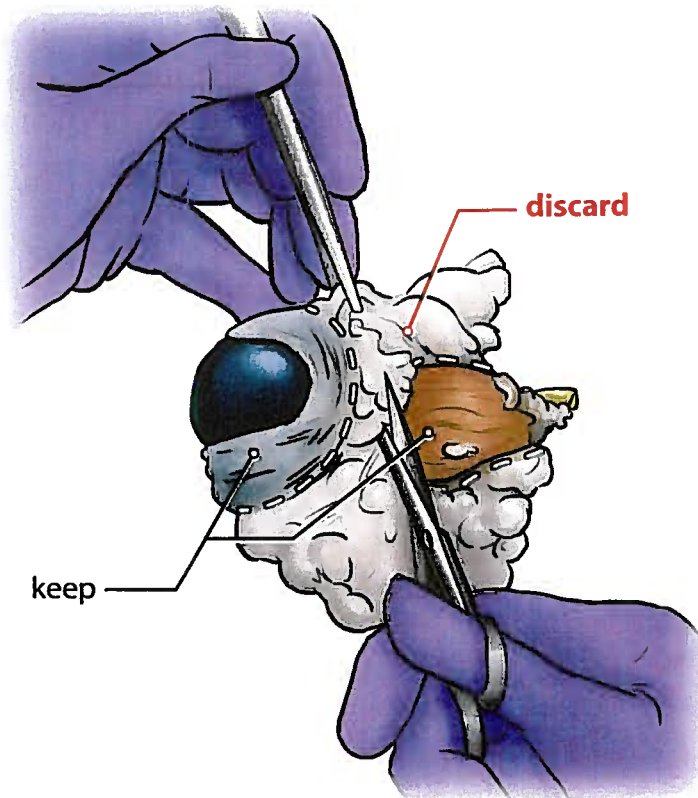
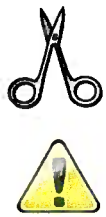


B. Preserved specimen



C. Dissected specimen

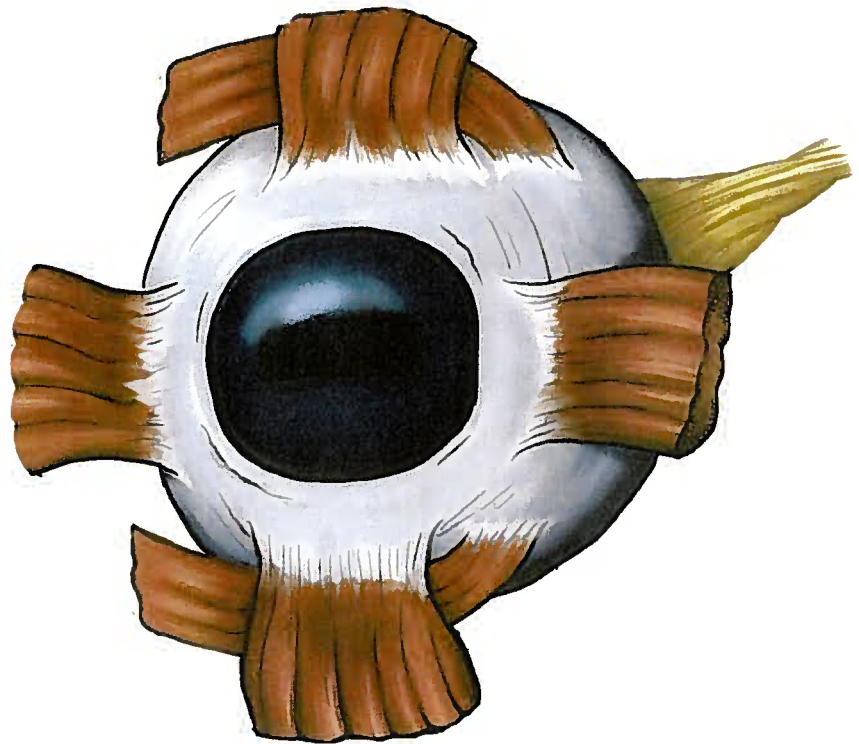
Cleaning the Eye



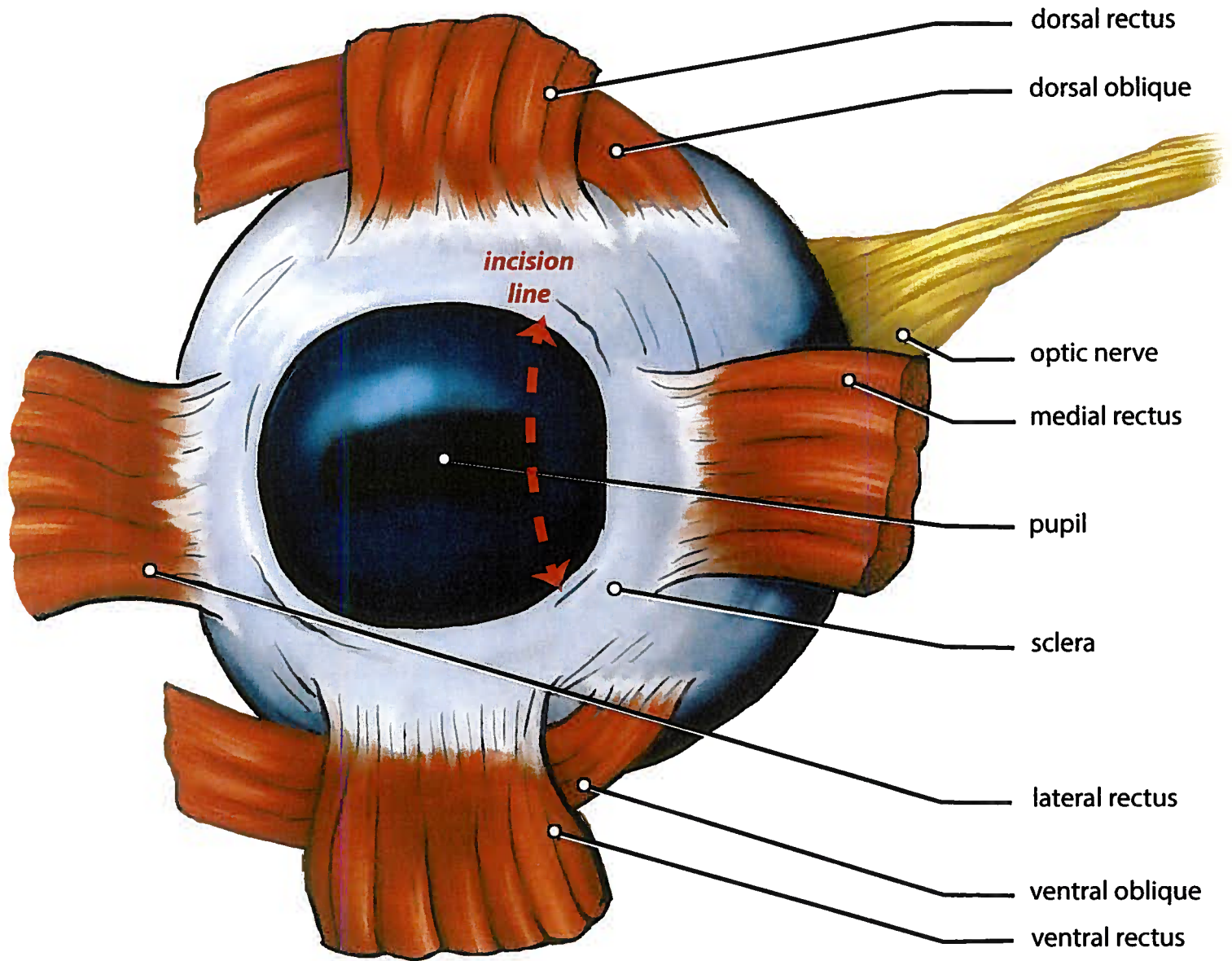
Using tweezers and scissors, carefully cut away and discard excess fat and connective tissue.

Keep the muscles (brown tissue) and nerve cord intact.

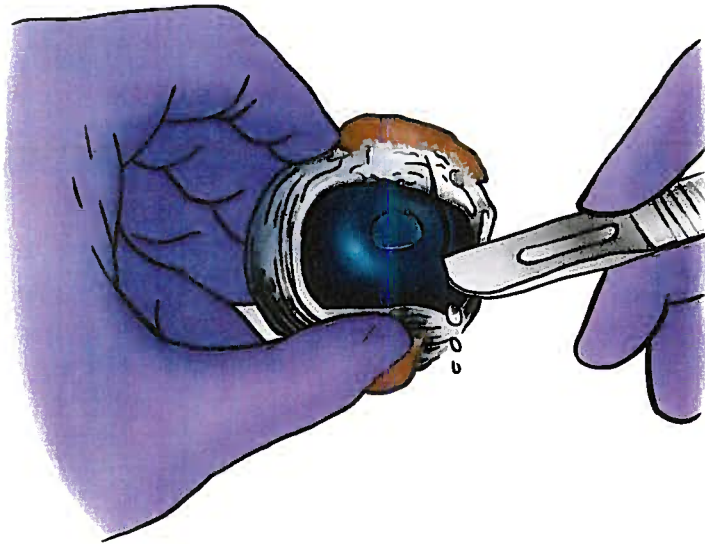
Your cleaned eye should resemble the image at the bottom of the page.



External Features



Cross-section of Eye



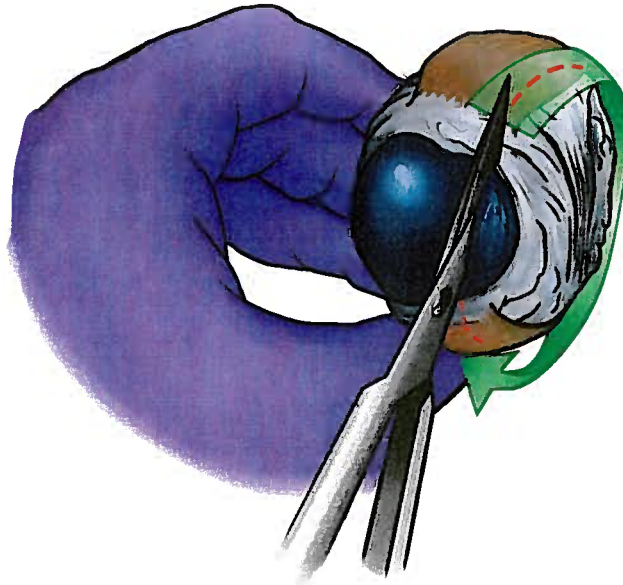
A

Using a scalpel, make a small incision on the sclera.



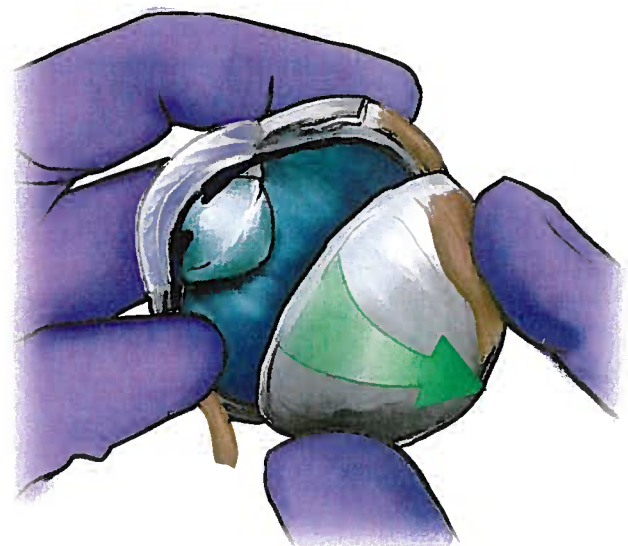
B

Continue to cut around the eye using scissors. Cut until you reach the opposite end of the original cut.

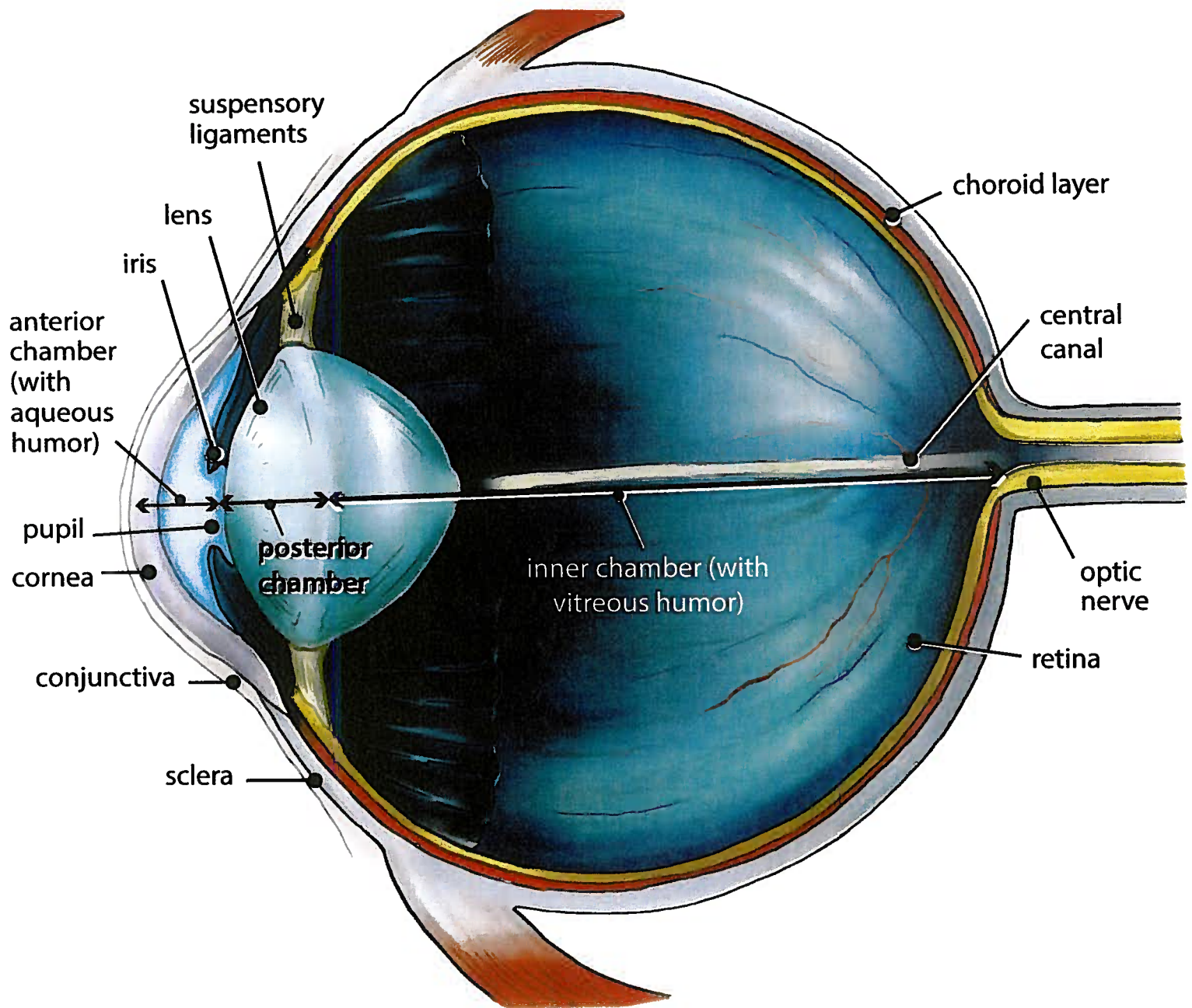


C

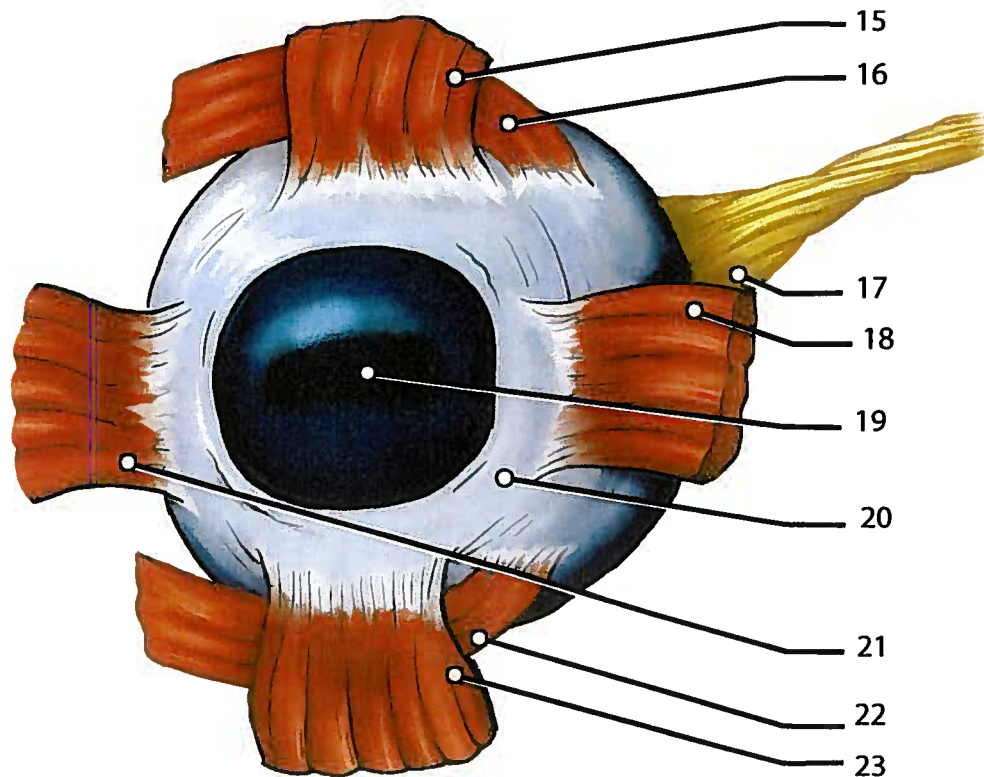
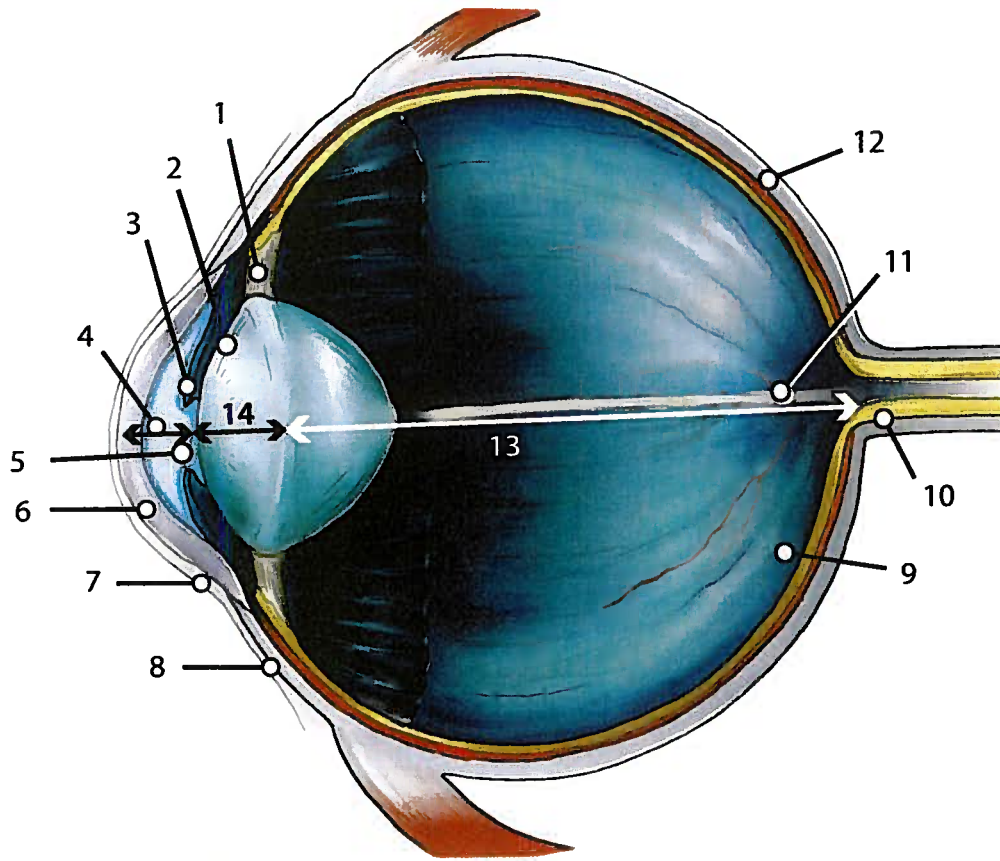
Gently separate the eye to view the internal features.



Interior Anatomy of the Eye



Quiz



Answer Key

1. Suspensory ligaments
2. Lens
3. Iris
4. Anterior chamber
5. Pupil
6. Cornea
7. Conjunctiva
8. Sclera
9. Retina
10. Optic nerve
11. Central canal
12. Choroid layer
13. Inner chamber
14. Posterior chamber
15. Dorsal rectus
16. Dorsal oblique
17. Optic nerve
18. Medial rectus
19. Pupil
20. Sclera
21. Lateral rectus
22. Ventral oblique
23. Ventral rectus